



PoE World

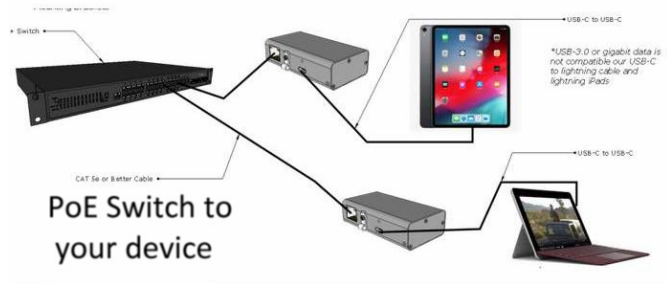
World Class
Injectors Switches Splitters
Extenders Testers

Our Locations and Partners :

PoE-Texas Austin Texas PoE-India Pune
India
PoE-UK London England PoE-World Shenzhen
China

<http://poe-world.com>

GAT-USBC-PD-V4® Isolated power + 10/100/1000mb Data



[Product Description - GAT-USBC-PD-V4® PoE supply and Data adapter](#)

This device provides a compact solution for delivering power and wired Ethernet data to a USBc device over 328ft of network cable. This PD (Powered Device) allows power to be carried on CAT-5e or CAT-6 network cables using either 802.3af standard or 48 volt passive PoE. 10/100/1000 or 10/100 switches can be used – the device will negotiate to the highest speed.

Intended for use with any 802.3af PoE switch – this active PoE solution negotiates with the switch to activate power and provide it to the client device. It is a compact and cost effective power solution. The PoE switch supplies between 48 and 56 volts DC at the source location. The higher DC voltage means the current is reduced by a factor of 9 compared to 5 volts, and then carried with 90% less loss over the Ethernet cable from the source. The USBc device then autonegotiates with the laptop or tablet for the highest charge rate supported, and allows you to extend the charge distance for this application up to 328ft or 100 meters.

802.3af switches can be used if the load is limited to 13 watts. The device will not automatically downgrade the output power if a 802.3af switch is used and the load is greater than 13 watts – please use a 802.3af switch or passive PoE injector with greater than 25 watts of power.

Simple usage:

- Step a) connect your PoE switch to an internet router
- Step b) use an Ethernet cable to connect the RJ45 female to your PoE switch up to 100 meter distance.
- Step c) connect the USBC male connector to your device (eg tablet)
- Step d) disable the wifi on the tablet
- Step e) run speed test

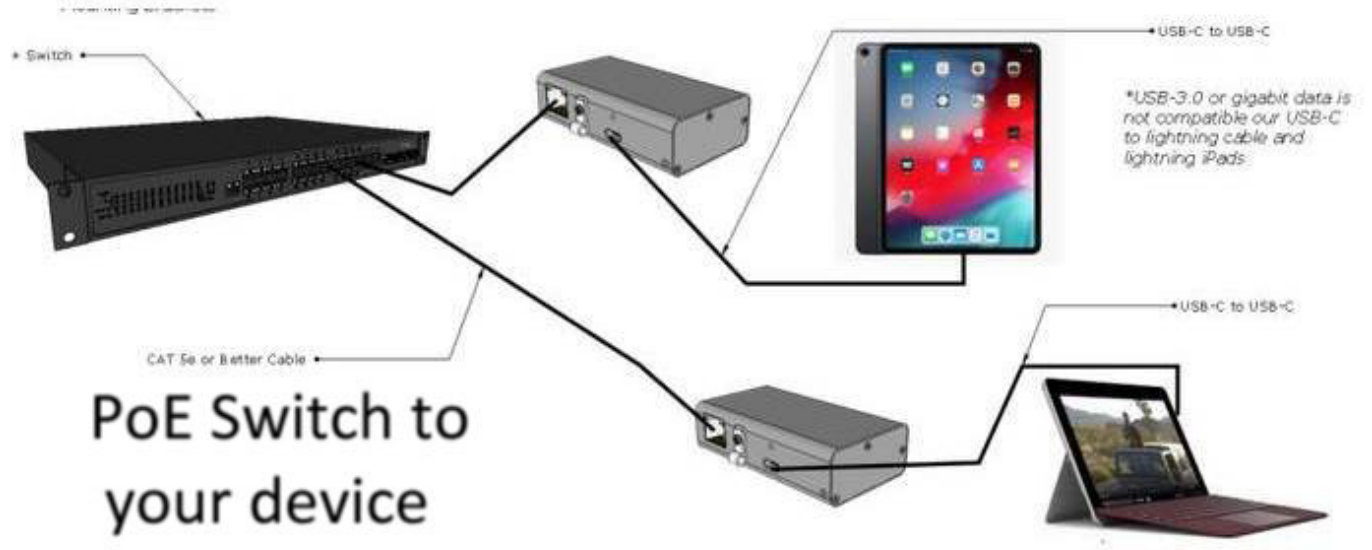
The Ethernet cable can be 568A or 568B style, 2 pairs (orange and green) are required for 100 mb, 4 pairs for 1000 mb/s operation. PoE power can be mode A or mode B.

[Specifications](#)

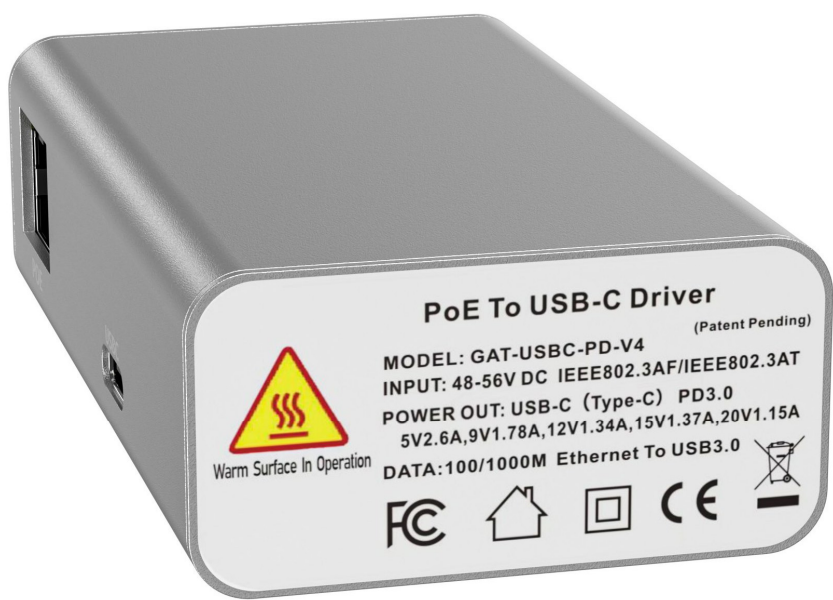
| | |
|---|---|
| Power source | RJ 45 female connector |
| Data | 10/100/1000 mbit/s RJ45 Ethernet to USBc bridge inside |
| Data+Power input Pins (802.3af mode A or mode B) | 1&2 and 3&6 – either polarity 4&5 plus and 7&8 minus |
| Input Voltage Max | Up to 57 volts |
| Input Current at 48v | 265 ma input delivers 2 amps out |
| | no load, default 5.2v – 2600 mA max 13 watts |
| | USBc 9v - 1780 mA 16 watts |
| Output Voltage | USBc 12v - 1340mA 16 watts |
| | USBc 15v - 1370mA 20 watts |
| | USBc 20v - 1150mA 23 watts |
| Standby power / Keep Alive | 440 mA with no load |
| Operating Temperature | 0°C ~ 50°C |
| Size | 76 x 22.5 x 43.6 mm |
| Weight | 2.5 ounces |



Data and Power by Ethernet



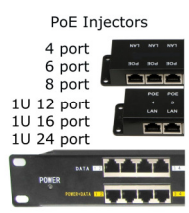
PoE Switch to your device



Use with any PoE-World PoE injector or PoE switch



PoE Tester



PoE-World injectors



Any PoE Switch